

park inn  
by Radisson

丽柏酒店

酒店简介目录  
Hotel Introduction Directory

01. 酒店简介  
Hotel introduction

02. 住宿  
stay

03. 会议  
meeting

04. 酒店餐饮  
hotel catering

## 1.1 酒店简介 Hotel introduction

### 丽柏酒店-广州越秀国际会议中心店 Park Inn by Radisson Guangzhou Yuexiu International Congress Center

尊敬的客户：  
Dear customer:

▶感谢您选择广州越秀国际会议中心丽柏酒店。  
Thank you for choosing the Park Inn at Guangzhou Yuexiu International Convention Center.

▶丽柏酒店是丽笙酒店集团旗下品牌，隶属于中国规模最大的综合性酒店旅游产业集团之一的锦江国际集团，在国际上拥有227家酒店，丽柏酒店是真正的分布全球的中高端酒店品牌。

▶Park Inn is a brand under the Radisson Hotel Group and is affiliated with Jinjiang International Group, one of the largest comprehensive hotel and tourism industry groups in China. With 227 hotels internationally, Park Inn is a truly high-end hotel brand globally distributed.

▶广州越秀国际会议中心丽柏酒店位于广州市越秀区核心市区，毗邻广州火车站，直线距离仅50米，地铁一站直达广州越秀国际会议中心，且酒店对面是越秀公园（4A）景区，真正实现住宿、会议游玩一条龙服务。

▶The Park Inn Hotel of Guangzhou Yuexiu International Convention Center is located in the core urban area of Yuexiu District, Guangzhou, adjacent to Guangzhou Railway Station, with a straight distance of only 50 meters. There is a subway station directly leading to Guangzhou Yuexiu International Convention Center, and opposite the hotel is the Yuexiu Park (4A) scenic area, truly achieving a one-stop service of accommodation, conference and play.

▶酒店紧邻环市西路、解放北路，内环路、三元里大道、广园西路收费站，行驶10-12分钟即可到达酒店，酒店拥有免费停车场40个停车位，极为便利。

▶The hotel is adjacent to Huanshi West Road, Jiefang North Road, Inner Ring Road, Sanyuanli Avenue, and Guangyuan West Road toll stations. It takes 10-12 minutes to reach the hotel, and the hotel has 40 free parking spaces, which is extremely convenient.

▶酒店距离地铁2号线、5号线仅50米，广州火车站地铁站A口步行3分钟即可到达酒店。  
The hotel is only 50 meters away from Metro Lines 2 and 5, and it is only a 2-minute walk from Entrance/Exit A of Guangzhou Railway Station subway station to reach the hotel.

1. 总经理General manager: 姜新园Chris Jiang

2. 手机号phone number: 15814050095

3. 地址: 广州市越秀区环市西路183号  
address: 183 Huanshi West Road, Yuexiu District, Guangzhou

4. 邮编zip code: 510000

5. 邮箱e-mail: jiangxinyuan@jinjianghotels.com.cn



## 2.1 住宿 stay

酒店外立面：  
Hotel facade:

▶广州越秀会议中心丽柏酒店共有112间客房，标间37间，大床69间，复式套房6间，房间面积28~40平米，餐厅可同时提供60个餐位，酒店拥有会议室、健身房、大堂吧、商务中心、公共洗衣房、停车场等项目。

▶The Park Inn Guangzhou Yuexiu Convention Center has a total of 112 guest rooms, including 37 standard rooms, 69 king beds, and 6 duplex suites, with a room area of 28-40 square meters. The restaurant can provide 60 dining spaces at the same time. The hotel has a conference room, gym, lobby bar, business center, public laundry room, parking lot, and other projects.

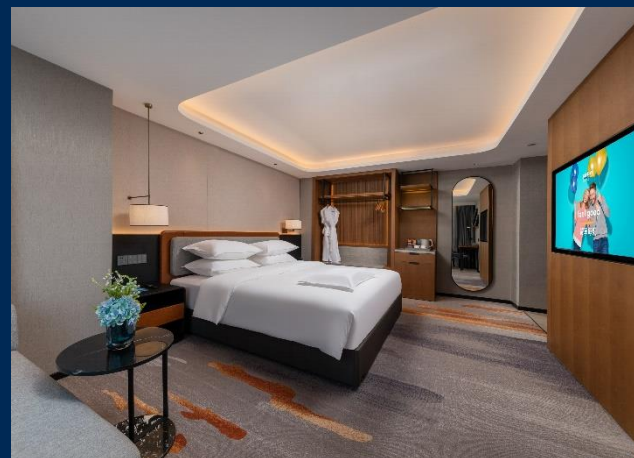
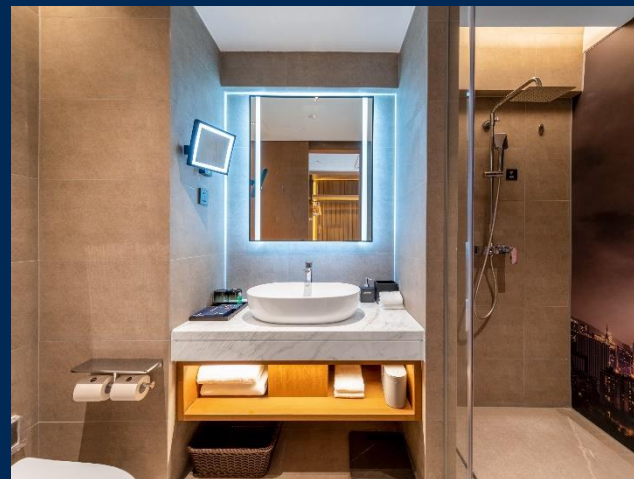


## 2.2 住宿 stay

### 大床房： Double Room

▶大床房面积28~35平米，房间有浴袍、房间一键开关客控按钮、独立空调、电脑桌、房间使用隔音气块打造隔音效果好，睡眠不好的可以选择我们酒店噢！

▶King Room Area 28-35 square meters, with bathrobes in the room, one click on/off guest control buttons, independent air conditioning, computer tables, and soundproof air blocks in the room for good sound insulation. For those who have difficulty sleeping, you can choose our hotel!



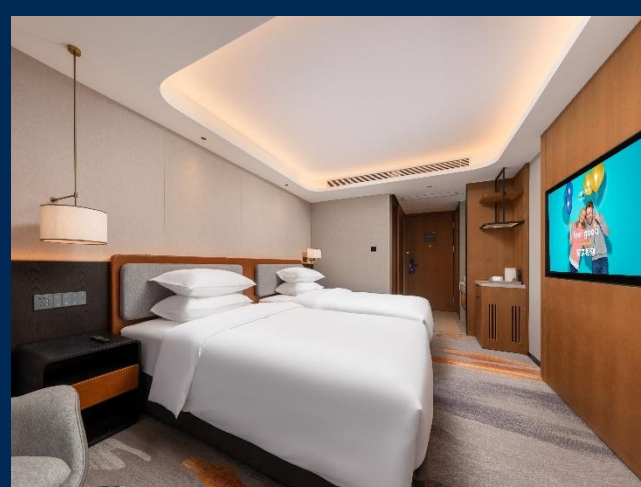


## 2.3 住宿 stay

### 双床房： Double bed room：

▶双床房面积28到35 平米房间均有安装高透玻璃窗，通透明亮，房间还为您准备了贵妃椅，电脑桌，人体工学椅等等让您住的开心住的快乐！

▶Double bed rooms with an area of 28 to 35 square meters are equipped with high transparency glass windows, which are transparent and bright. The room also provides you with luxurious chairs, computer tables, ergonomic chairs, and more to make your stay happy and joyful!

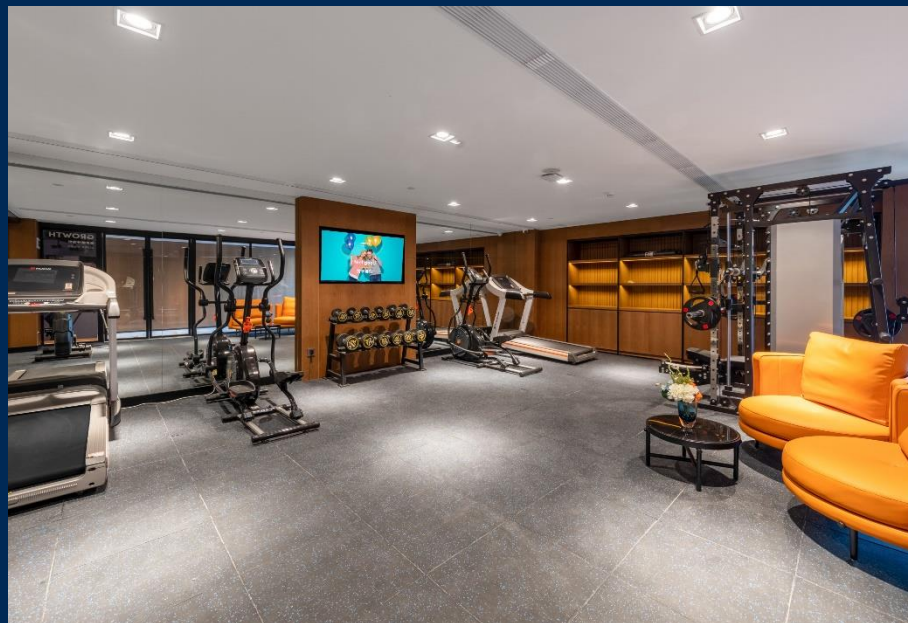


## 2.4 住宿 stay

### 健身房： GYM:

▶住店客人免费使用健身房，健身房内有跑步机、哑铃、瑜伽垫、瑜伽球等各种健身器材，供您使用。

▶Guests staying in the hotel can use the gym for free. There are various fitness equipment such as treadmills, dumbbells, yoga mats, and yoga balls available for your use.





## 2.5 住宿 stay

### 洗衣房： Laundry:

- ▶酒店给顾客提供洗衣房，洗衣房里给顾客免费提供洗衣液、洗衣机、烘干机，挂烫机等物品。
- ▶The hotel provides customers with a laundry room, where they are provided with free laundry detergent, washing machines, dryers, ironing machines, and other items.



### 3.1 会议 meeting



- ▶会议场地可供30-60人进行作业，参会包含免费投影仪，音响，话筒，纸，笔，矿泉水，花茶包可提供。
- ▶The conference venue can accommodate 30-60 people for homework, and participants include free projectors, speakers, microphones, paper, pens, mineral water, and tea bags.



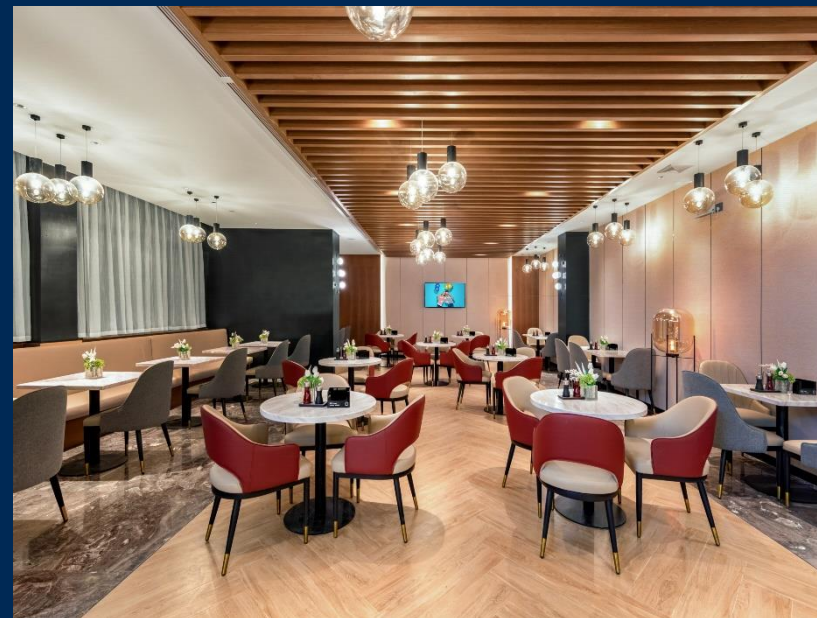
## 4.1 酒店餐饮 hotel catering

▶餐厅可同时提供60个餐位，餐厅面积大约200平米。

The restaurant can provide 60 seats at the same time, with an area of approximately 200 square meters.

▶酒店早餐是自助形式，有75种之多，中西餐结合，自助早餐价格68元一位，欢迎您来品尝。

▶Hotel breakfast is a self-service format with 75 different options, combining Chinese and Western cuisine. The buffet breakfast is priced at 68 yuan per person, and you are welcome to taste it.





Thanks!



[www.radissonhotels.com](http://www.radissonhotels.com)